



Streets and Walkways Sub (Planning and Transportation) Committee

Date: TUESDAY, 8 NOVEMBER 2016
Time: 1.45 pm
Venue: COMMITTEE ROOMS, 2ND FLOOR, WEST WING, GUILDHALL

8. **ANY OTHER BUSINESS THAT THE CHAIRMAN CONSIDERS URGENT:
QUARTERLY SUMMARY OF CITY OF LONDON POLICE TARGETED ROADS
POLICING ACTIVITY**

Report of the Commissioner of the City of London Police.

For Information
(Pages 1 - 8)

Item received too late for circulation in conjunction with the Agenda.

John Barradell
Town Clerk and Chief Executive

This page is intentionally left blank

NOT PROTECTIVELY MARKED -

| | |
|------------------------------------------------------------------------------------------------------------------------------------------------------------------------------------------------------------------------------------------------------------------------------------------------------------------------------------------------------------------------------------------------------------------------------------------------------------------------------------------------------------------------------------------------------------------------------------------------|-----------------|
| Meeting: | Date(s): |
| Streets and Walkways Sub-Committee | 08/11/16 |
| Subject: Quarterly summary of City of London Police targeted roads policing activity | |
| Report of: PS Sarah Smallwood 115CP | |
| Contact Number: 020 7601 2786 | |
| Document Classification: PROTECT | |
| For Information/Decision: INFORMATION | |
| <u>Summary</u> | |
| <p>A quarterly summary of activity undertaken by Transport and Highways Operations Group (THoG) in City of London Police (CoLP). This will demonstrate work undertaken in support of force priority of enforcement for safer roads, and in support of Corporation of London (CoL) road safety and education activity.</p> <p>It contains a summary of data and information and is not intended to provide a comprehensive list of all criminal offences addressed, additional police deployments or a breakdown of officer hours, either within the department or across the organisation.</p> | |

Main Report

Operations and Events

1. In July and August 2016, officers undertook enforcement campaigns for seatbelts and mobile phone use. We also participated in NPCC campaigns on motorcycles and speeding. Op Atrium was conducted and an Exchanging Places roadshow in conjunction with CoL. There was also enforcement activity on Op Regina, to reduce the sexual offences in taxis by enforcement of licencing on private hire and Hackney Carriages. There was also a two day Road Safety event held at St Pauls in support of CoL Road Safety Team.

<S:\DEPARTMENT\THoG\Performance\Streets and Walkways report>

NOT PROTECTIVELY MARKED - MANAGEMENT

2. In September 2016, officers participated in NPCC national operation targeting carriage of dangerous goods, motorcycles and a seatbelt campaign. Officers on night duty targeted drink and drug driving, and a number of operations with the Public Carriage Office were carried out. There was also a week targeting speeding and of Op Atrium (pedal cycle) enforcement. An Exchanging Places Roadshow had a low attendance rate and a Cycle Secure operation pan-London was carried out 12-16 September on pedal cycle crime in conjunction with Communities Officers.

Upcoming Quarter

3. In the quarter October to December 2016, we have planned five speeding operations, two drink drug driving operations and four operations in conjunction with specialist behaviour detection officers from Project Servator.
4. In October we have planned continued Tower Bridge diversion patrols in support of CoL and Transport for London (TfL). We will be undertaking Op Atrium enforcement and an Exchanging Places Roadshow on 27th October. There will be a number of operations with Public Carriage Office and from week commencing 17th we will be participating in NPCC campaign targeting uninsured drivers.
5. In November we have a higher level of abstractions for Lord Mayors Show and other ceremonial events. We will be participating in NPCC campaign for use of mobile phone whilst driving, and in a pan-Europe TISPOL campaign Op Trivium to target criminality by foreign national offenders. Op Atrium, an Exchanging Places roadshow and Public Carriage Office enforcement operations will continue.
6. In December we will participate in the national NPCC Christmas Drink and Drug campaign.

NOT PROTECTIVELY MARKED - MANAGEMENT

Data (Extracted from Performance Monitoring Group report)

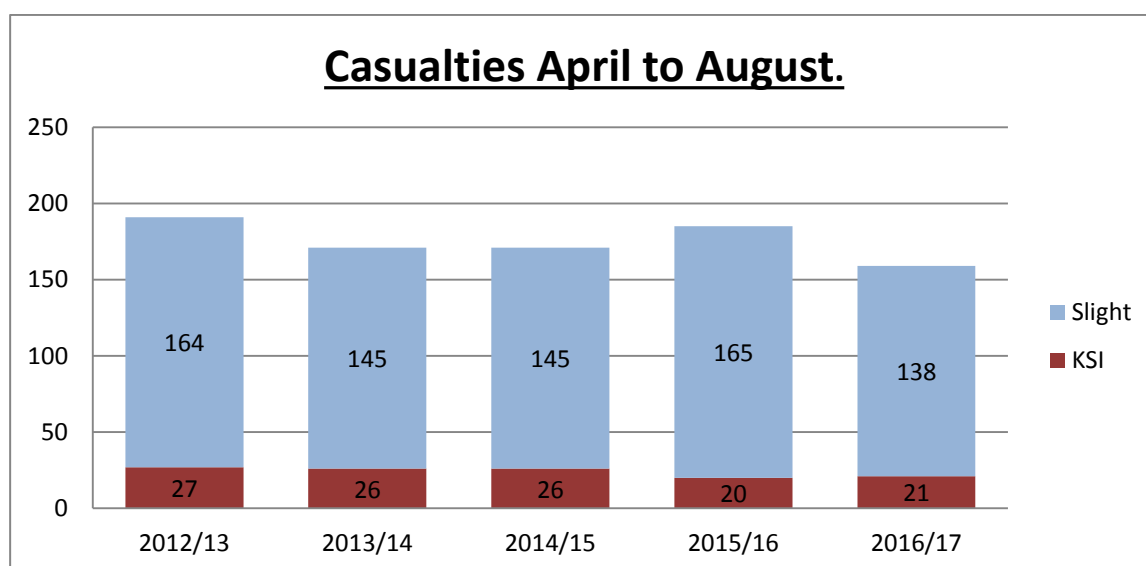
7. Collisions (by category of injury)

| | Apr | May | Jun | Jul | Aug | Sep | Oct | Nov | Dec | Jan | Feb | Mar | FYTD |
|---------|-----|-----|-----|-----|-----|-----|-----|-----|-----|-----|-----|-----|------|
| FATAL | 0 | 0 | 0 | 0 | 0 | | | | | | | | |
| SERIOUS | 4 | 2 | 4 | 7 | 3 | | | | | | | | |
| SLIGHT | 30 | 23 | 26 | 24 | 24 | | | | | | | | |

2015 comparison

The figures below represent **killed and serious injury collisions** only.

| | Apr | May | Jun | Jul | Aug | Sep | Oct | Nov | Dec | Jan | Feb | Mar | FYTD |
|---------|-----|-----|-----|-----|-----|-----|-----|-----|-----|-----|-----|-----|------|
| 2015/16 | 1 | 8 | 3 | 4 | 4 | 2 | 4 | 3 | 3 | 5 | 4 | 3 | |
| 2016/17 | 4 | 2 | 4 | 7 | 3 | | | | | | | | |



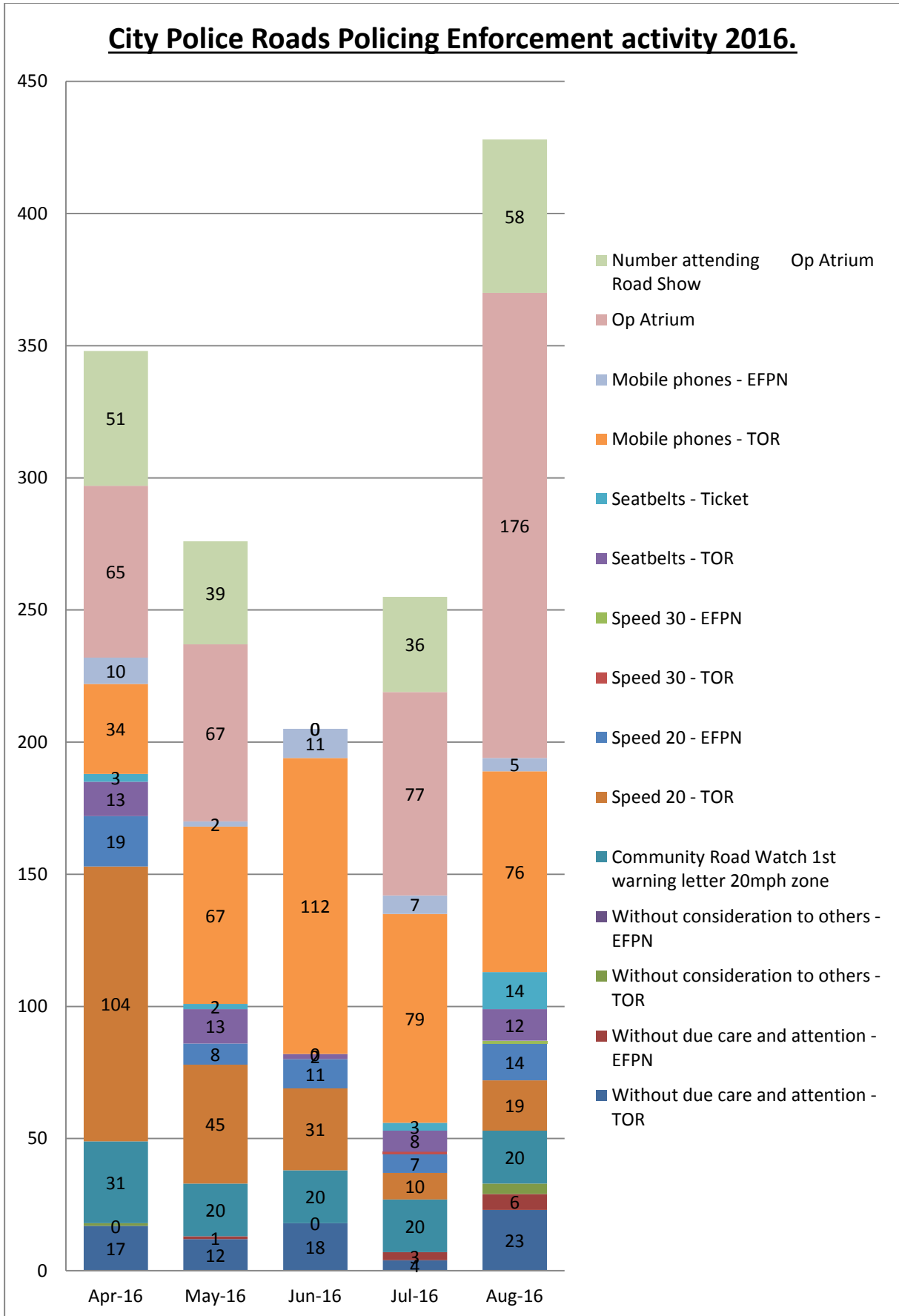
8. Enforcement returns

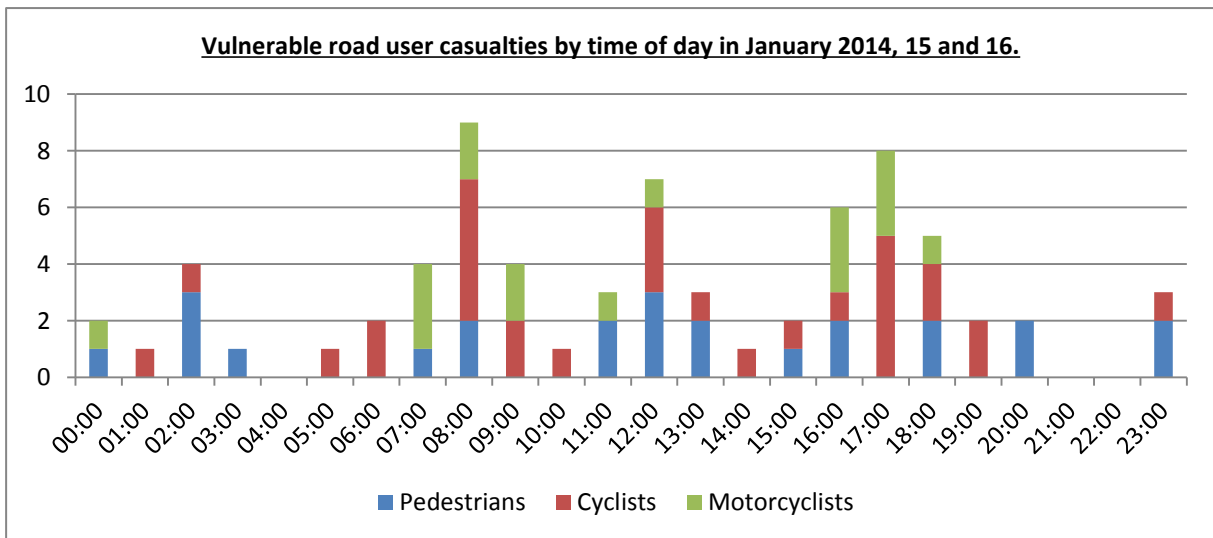
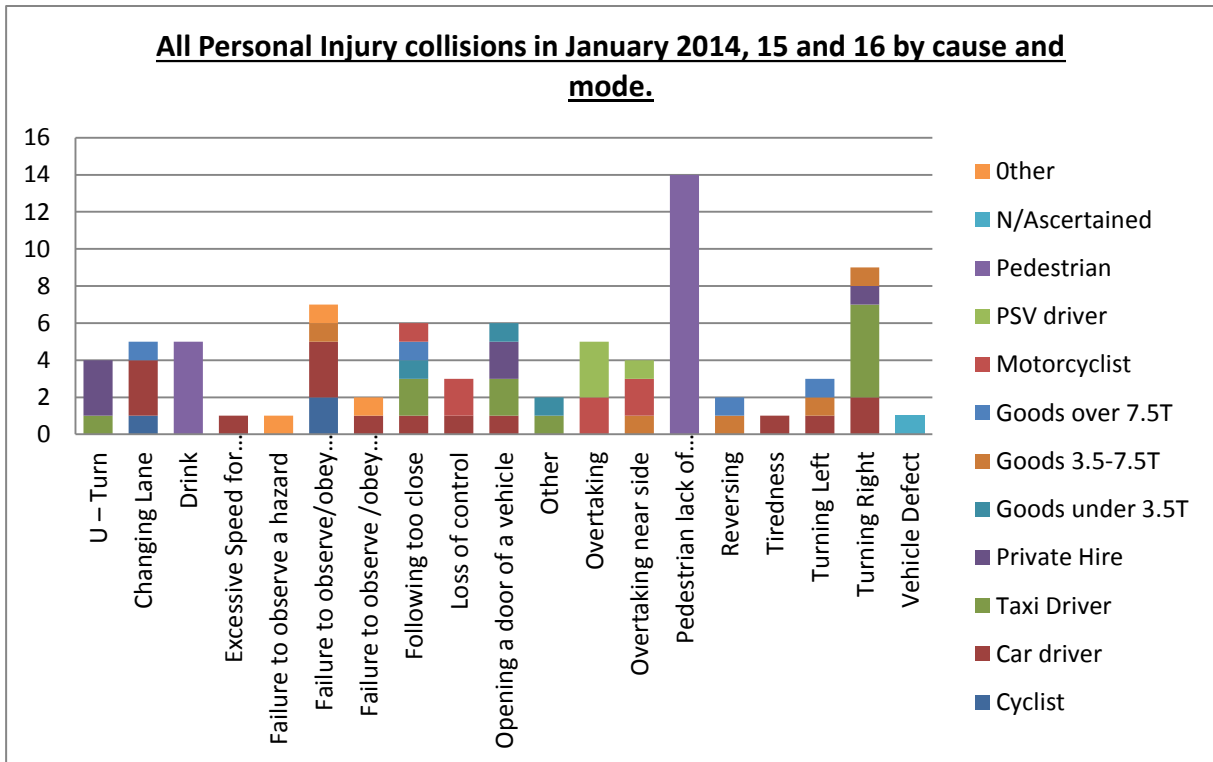
April 2016 -
March 2017

| Month | 04 | 05 | 06 | 07 | 08 | 09 | 10 | 11 | 12 | 01 | 02 | 03 | TOT AL |
|---------------------------------------|----|----|----|----|----|----|----|----|----|----|----|----|-----------|
| Without due care and attention - TOR | 17 | 12 | 18 | 4 | 23 | | | | | | | | 74 |
| Without due care and attention - EFPN | 0 | 1 | 0 | 3 | 6 | | | | | | | | 10 |

NOT PROTECTIVELY MARKED - MANAGEMENT

| | | | | | | | | | | | | | |
|----------------------------------------------------|-----|----|-----|----|-----|--|--|--|--|--|--|--|-----|
| Without consideration to others - TOR | 1 | 0 | 0 | 0 | 4 | | | | | | | | 5 |
| Without consideration to others - EFPN | 0 | 0 | 0 | 0 | 0 | | | | | | | | 0 |
| Community Road Watch 1st warning letter 20mph zone | 31 | 20 | 20 | 20 | 20 | | | | | | | | 111 |
| Speed 20 - TOR | 104 | 45 | 31 | 10 | 19 | | | | | | | | 209 |
| Speed 20 - EFPN | 19 | 8 | 11 | 7 | 14 | | | | | | | | 59 |
| Speed 30 - TOR | 0 | 0 | 0 | 1 | 0 | | | | | | | | 1 |
| Speed 30 - EFPN | 0 | 0 | 0 | 0 | 1 | | | | | | | | 1 |
| Seatbelts - TOR | 13 | 13 | 2 | 8 | 12 | | | | | | | | 48 |
| Seatbelts - Ticket | 3 | 2 | 0 | 3 | 14 | | | | | | | | 22 |
| Mobile phones - TOR | 34 | 67 | 112 | 79 | 76 | | | | | | | | 368 |
| Mobile phones - EFPN | 10 | 2 | 11 | 7 | 5 | | | | | | | | 35 |
| Op Atrium | 65 | 67 | 0 | 77 | 176 | | | | | | | | 385 |
| Number attending Op Atrium Road Show | 51 | 39 | 0 | 36 | 58 | | | | | | | | 184 |





| IMPACT and other SIGNIFICANT IMPLICATIONS | |
|----------------------------------------------------------------|---------------------------------------------------------------------------------------------------------------------------------------------------------------------------------------------------------------------------------------------------------------------------------------|
| Policing Plan priorities: | <ul style="list-style-type: none"> • Counter Terrorism • Economic Crime • Responding to the Community • Excellent Value for Money |
| External Drivers: | <ul style="list-style-type: none"> • HMIC • NPIA • Home Office • Other |
| Performance / Target(s) | |
| Diversity and equality: | <ul style="list-style-type: none"> • Sex • Religion and Belief • Race • Gender Reassignment • Disability • Age • Pregnancy and Maternity • Marriage and Civil partnership • Sexual Orientation |
| Risk(s) | |
| Staffing Implications | |
| Policy implications | |
| Summary or reference to relevant legislative provisions | |
| List any additional approval / consultation required | |
| Impact on or links to Collaboration / Partnerships | |
| Background Documents | |

This page is intentionally left blank